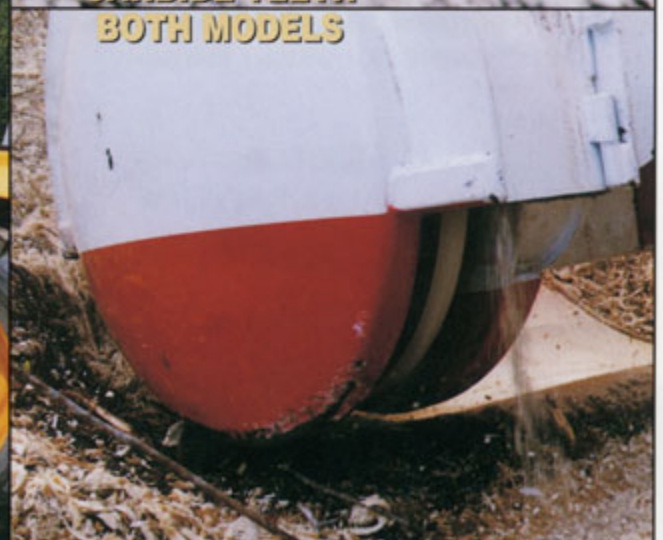
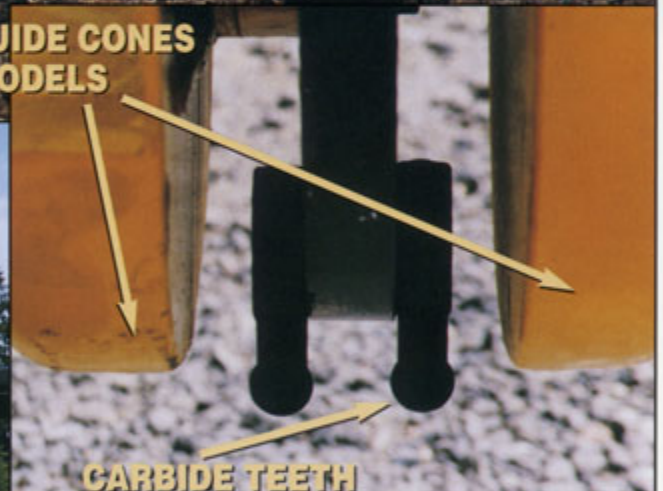
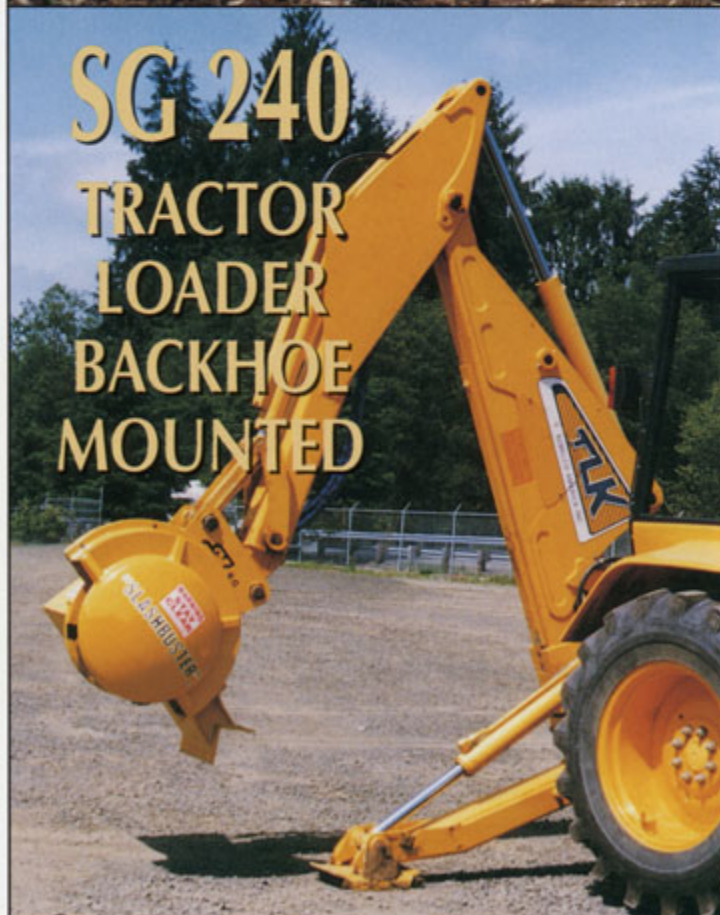


“SLASHBUSTER”[®] STUMPGRINDERS





**DOUBLE HEEL RACK
DIG
PUSH
PULL**

**PATENTED
GUIDE CONES FOR
SMOOTH, EASY
OPERATION**

**OPTIONAL TILT MOUNT
WILL TILT 45 DEGREES
EITHER SIDE OF CENTER**

"SLASHBUSTER" EQUIPMENT

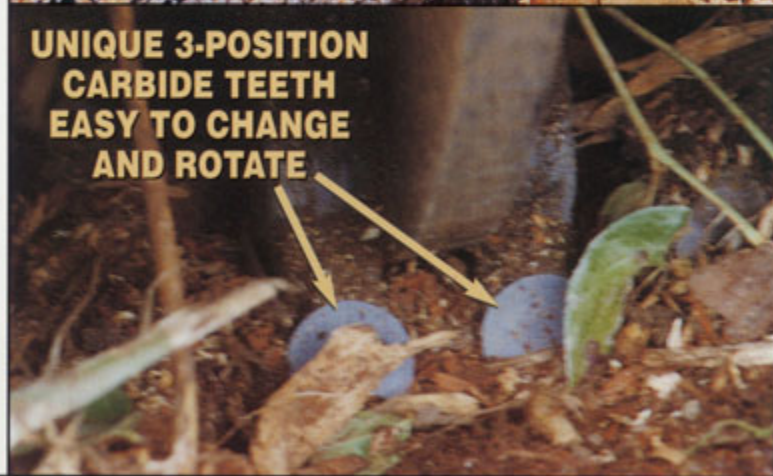
**UNMATCHED IN PERFORMANCE,
RELIABILITY AND OUTPUT**

**D&M "SLASHBUSTER" EQUIPMENT IS THE MOST
ADVANCED STATE-OF-THE-ART BRUSHCUTTING
AND CLEARING EQUIPMENT KNOWN**

**AVAILABLE FOR
TRACTOR/LOADER/BACKHOE**



**UNIQUE 3-POSITION
CARBIDE TEETH
EASY TO CHANGE
AND ROTATE**



D & M Machine Division, Inc.

12 Monte-Brady Road • Montesano, WA 98563
(360) 249-3366 • Fax: (360) 249-1171
e-mail: info@slashbuster.com
www.slashbuster.com

Manufacturer of "Slashbuster." Land Management Equipment

IP-2142313

THIS EQUIPMENT IS PROTECTED BY ONE OR MORE OF THE FOLLOWING PATENTS:
U.S. PATENTS NO. 4,769,977; NO. 5,103,882; NO. 5,201,350; NO. 5,329,752; NO.
5,408,814; AUSTRALIAN PATENTS NO. 600716, NO. 618679, NO. 652131, NO.
654411; CANADIAN PATENTS NO. 1,281,908; NO. 2,048,971; NEW ZEALAND PATENT
NO. 245249; EUROPEAN PATENT NO. 0298977, REGISTERED IN GB, FR, IT, CH, NL,
BE (298977E), DE (37793098), AT (0076250E), SE (8790199487); AND PATENTS
PENDING IN THE UNITED STATES, AUSTRALIA, CANADA, EUROPE, FINLAND, AND
NEW ZEALAND.